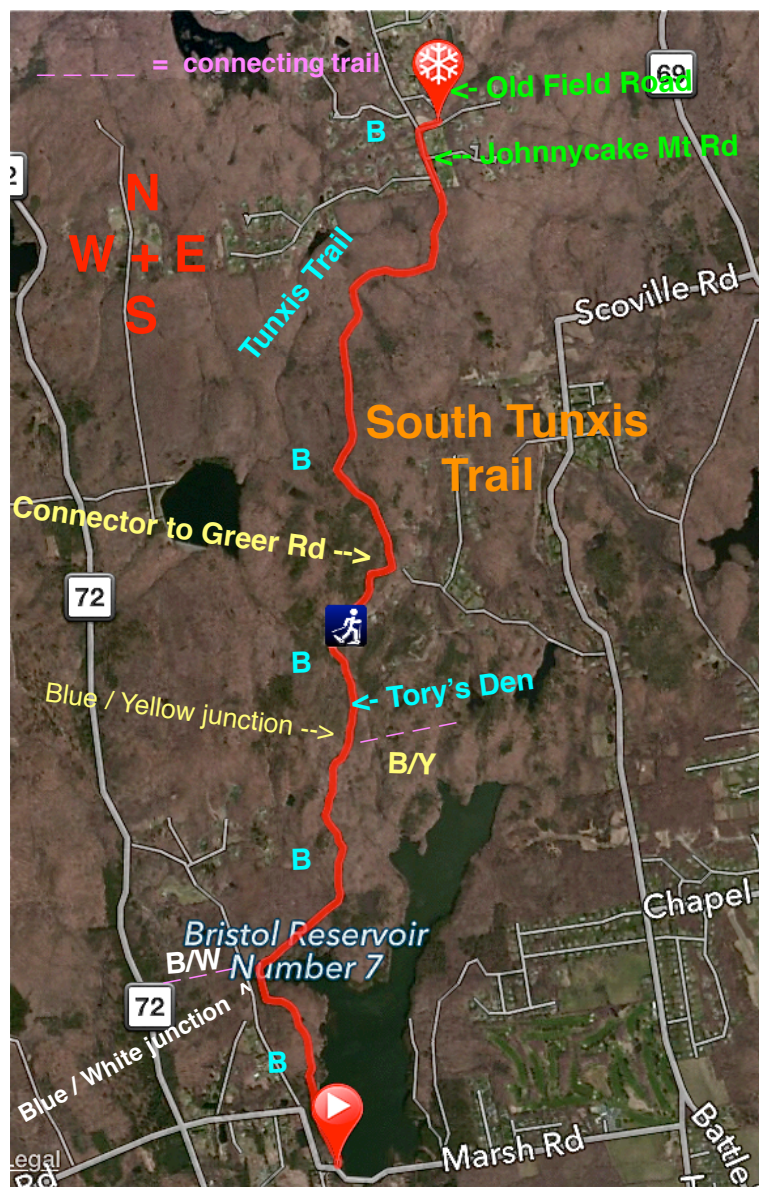


Tunxis Trail South: Class 1: 8.8 miles & 2,160' vertical 5 hours



Tory's Den

**Junction to the Mile of Ledges
on the Blue/Yellow Trail**



View of Bristol Reservoir #7



Park on Old Field Road, which is off of Johnnycake Mt Road (41°44'59.0"N 72°59'30.1"W). Park 50 yards west of the first driveway. Follow the blue blazes (B) of the Tunxis Trail south along both of these paved roads. At 0.3 miles hike straight past the cul-de-sac entering the forest. At 1.8 you will begin to climb & then pass the Connector Trail to Greer Road. Continue on this rolling trail to reach Tory's Den at 2.8 miles. Keep straight passing the junction to the Mile of Ledges on the Blue / Yellow Trail at 2.9 miles. At 3.5, the Trail takes a sharp left turn 10 yards in front of a reservoir gate on East Plymouth Road. At 4.4 miles, the Tunxis Trail ends at another reservoir gate next to Marsh Road. Parking for a few cars is located across the street and also by a small green at the junction of Marsh & East Plymouth Road. (41°41'58.8"N 72°59'53.4"W)

This could be done as an "out & back 8.8 hike" totaling 8.8 miles or a one way hike using 2 cars totaling 4.4 miles.